

A tip to help
relax your
eyes!

What is Myopia Management?

Myopia management involves employing different techniques to influence the size of the eyeball and slow the rate at which it grows. This is particularly important in children, as it is during this period that the greatest change can happen and when myopia management can be most effective.

50%

By 2050, it is predicted that 50% of the world's population will have myopia!

What is Myopic Progression?

If the degree of myopia increases over time, we define this as myopic progression. It is influenced both by the size of the eyeball (axial length) and the focusing structures of the eye (cornea and lens). This not only means stronger and thicker glasses, but also an increase in the risk of eye disease later in life.

Treatment Options

Specialty Spectacle Lenses

Spectacle lenses incorporated with peripheral defocus for controlling myopia.

Offered as the Stellest or the MiyoSmart Lenses!

Specialty Soft Contact Lenses

Soft contact lenses with peripheral defocus to be used during the day for controlling myopia.

Offered as the CooperVision MiSight or J&J Abiliti Daily Disposable Contact Lenses!

Atropine Eye Drops

Atropine eye drops can be prescribed for "off label" use as a myopia control method.

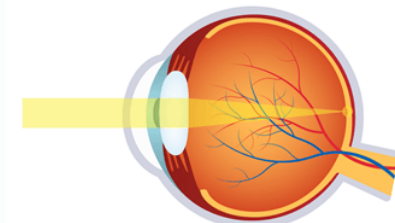
Prescribed on-label drops coming soon!

The 20-20-20 Rule

Every 20 minutes, look up from your screen and focus on something 20 feet away for at least 20 seconds

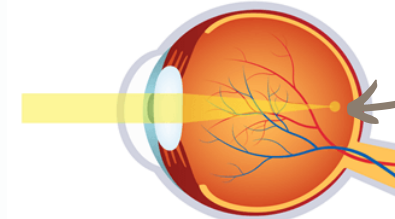


Introducing the Myah, our newest machine to help fight myopia!



Normal vision

Light focusing in front of the retina



Myopia

Myopia Management Pricing

Optomap + Myah Scans \$60

Myopia Management Consultation \$100

6-month Checkup \$75

Spectacle Lenses ~\$600
(frames not included)

Contact Lenses ~\$490/6-month supply
(CL fitting not included)

Atropine Drops ~\$55/month

Talk to your optometrist and find out which treatment option is best suited for your needs!

Interested in Myopia Management for your Child?

Book a Myopia Management Consultation with their doctor! During this 30-minute appointment you can ask any questions you have, discuss various treatment options and which one best suits their needs, and take action on myopia early!

More Information?

Please ask our optometrists and/or our staff if you have any further questions.

More information can also be found at:
www.piercefamilyvision.com

We hope to SEE you soon!



PFV Guide to Understanding Myopia

Dr. Ellison, Dr. Singh, Dr. Faria, Dr. Dippel

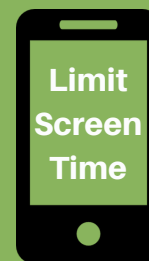
What is Myopia (Near-Sightedness)?

Myopia is a condition where the light is focused in front of the retina when it enters the eye. This creates blurred vision when looking at objects far away.

New to our pretesting area, our Myah will get a baseline axial length, which can be used to calculate myopic risk. As we continue to test and gather information, we can establish myopic trends and get ahead of their myopia.

3 Simple Things to Help Protect your Child's Vision

1



2



3

