

What is Myopia Management?

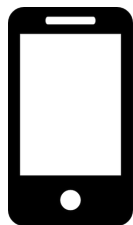
Myopia management involves using different techniques to slow the rate at which the eye grows. This is particularly important during childhood, as it is during this period that eye size changes the most and when myopia management can be most effective



The fight against myopia starts here. Early testing and management matters!

Tips to Help Protect your Child's Vision

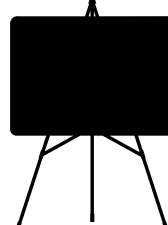
Limit Screen Time



90 minutes outdoors per day



Screen for Myopia

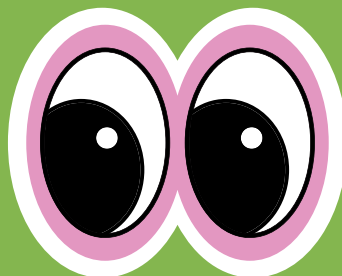


The 20-20-20 Rule

Every 20 minutes, look up from your screen and focus on something 20 feet away for at least 20 seconds

More information can also be found at: mykidsvision.org

We hope to SEE you soon!



Our Guide to Understanding Myopia

Dr. Ellison, Dr. Singh, Dr. Faria, Dr. Dippel, Dr. Veetil

What is Myopia? (Near-Sightedness)

Myopia is a condition in which the size and shape of the eye causes light to focus not quite in the right spot. This creates blurred vision when looking at objects far away.

Our MYAH device measures eye size, which can be used to calculate myopia risk. This allows us to identify, monitor, and manage myopia to slow its progression.

By 2050, it is predicted that 50% of the world's population will have myopia!



Interested in Myopia Management?

Book a 30-minute Myopia Management Consultation with your optometrist today! During this 30 minute appointment, you can ask questions, discuss various treatment options, and discover which best suits your child's needs. This is the first step in taking action on myopia early!

Myopia Management Pricing

(fees starting at)

Optomap + Myah Scans

68

Myopia Management Consultation

100

6-month Checkup with Myah Scan

75

Spectacle Lenses

~600
(frames not included)

Contact Lenses (6 mo supply)

~540
(CL fitting not included)

Atropine Drops (per month)

~55

Ortho-K Lenses + Appt. Fees (first year)

~2000
(initial fees)

Have some questions?

Please ask our optometrists/staff if you have any further questions.

Visit our website today!
piercefamilyvision.com

Treatment Options

Specialty Glasses

Glasses incorporated with innovative myopia-controlling peripheral defocus technology.

Offered as Stellest or MiyoSmart lenses.

Specialty Contact Lenses

Soft contact lenses with innovative myopia-controlling peripheral defocus technology for daytime use.

Offered as CooperVision MiSight 1-Day or Acuvue Abiliti 1-Day Soft Therapeutic Lenses for Myopia Management.

Atropine Eye Drops

Atropine eye drops can be prescribed for "off label" use as a myopia control method.

Prescribed on-label drops are in development and coming soon.

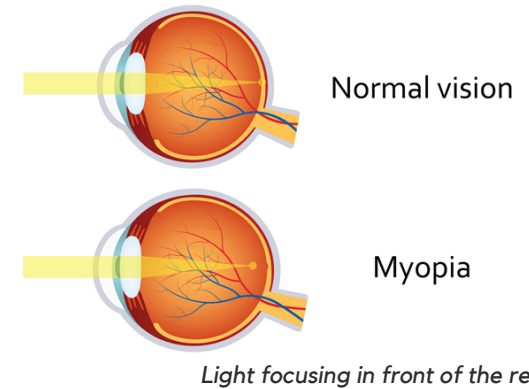
Ortho-K Lenses

Rigid contact lens worn overnight to reduce myopia progression and eliminate the need to wear glasses during the day.

Offered as Acuvue Abiliti Overnight Lenses for Myopia Management.

What is Myopic Progression

Myopic progression is the amount that myopia increases over time. As myopia increases, not only are stronger and thicker glasses required, but the risk of eye disease later in life also increases.



Understanding Peripheral Defocus

Myopia causes light in the periphery to focus in a way that tells the eye to keep growing. This creates a feedback loop in which the body's response to the problem causes myopia to get worse. By using peripheral defocus technology, we can focus peripheral light in a way that slows growth, thereby slowing myopic progression!